

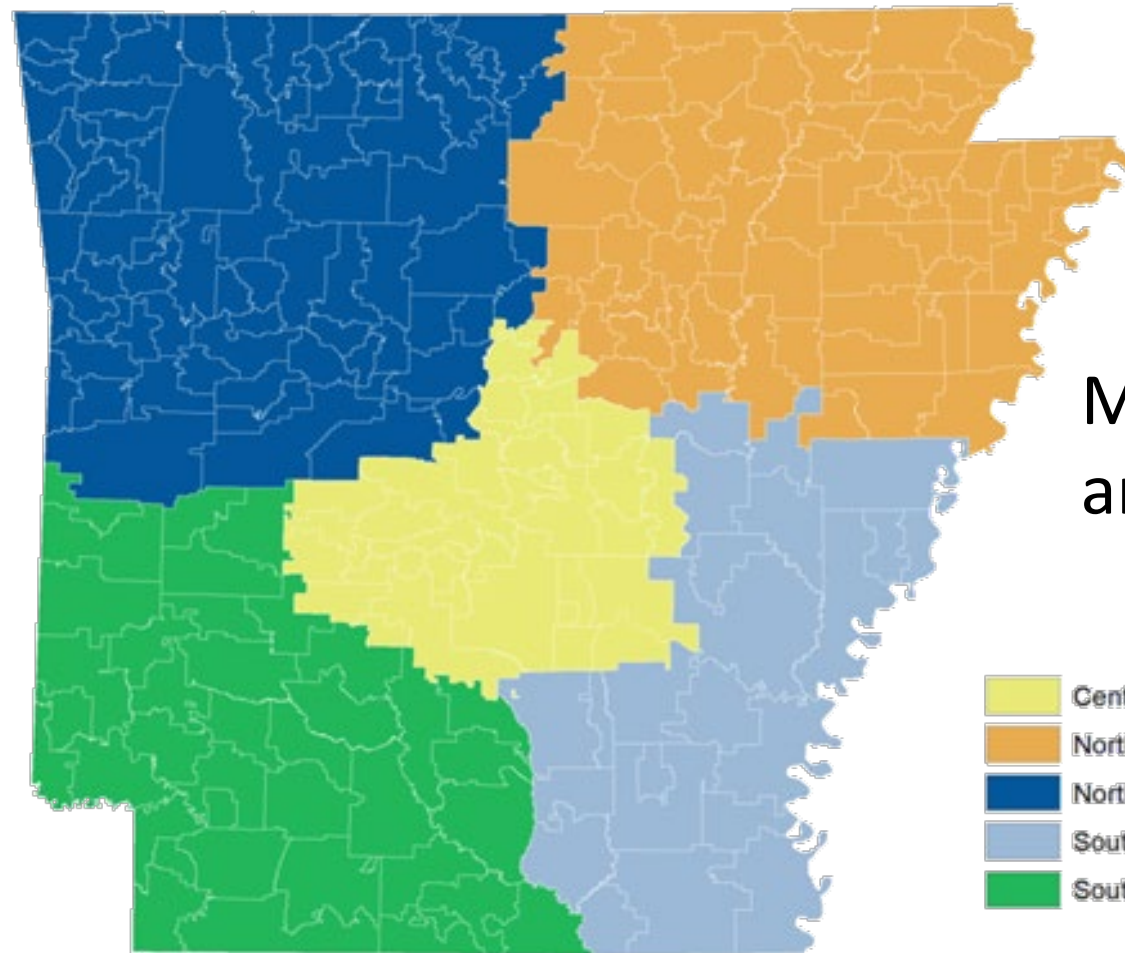
Conversations With...

The New



Tuesday, March 30, 2021
& Thursday, April 1, 2021

- 6 Zoom sessions
- 190 total attendees / 384 registrations
- Purposes:
 - Cast vision and set strategic direction
 - Collect input on leadership development needs
 - Discuss expansion



March 30
and April 1



Poll and Chat Responses

Demographic Data

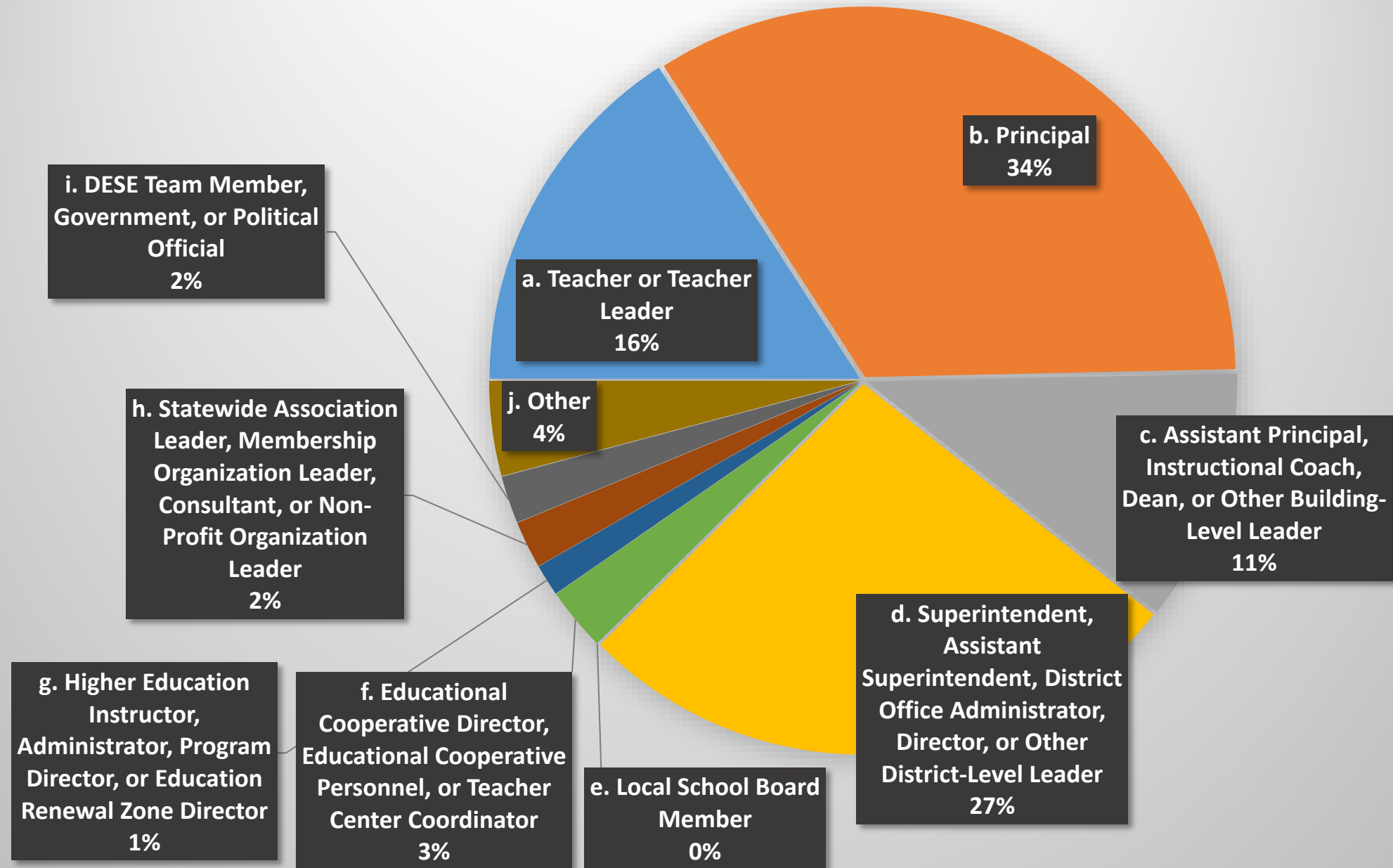
The following slides depict demographic information supplied by participants through the Zoom poll and Zoom chat features.



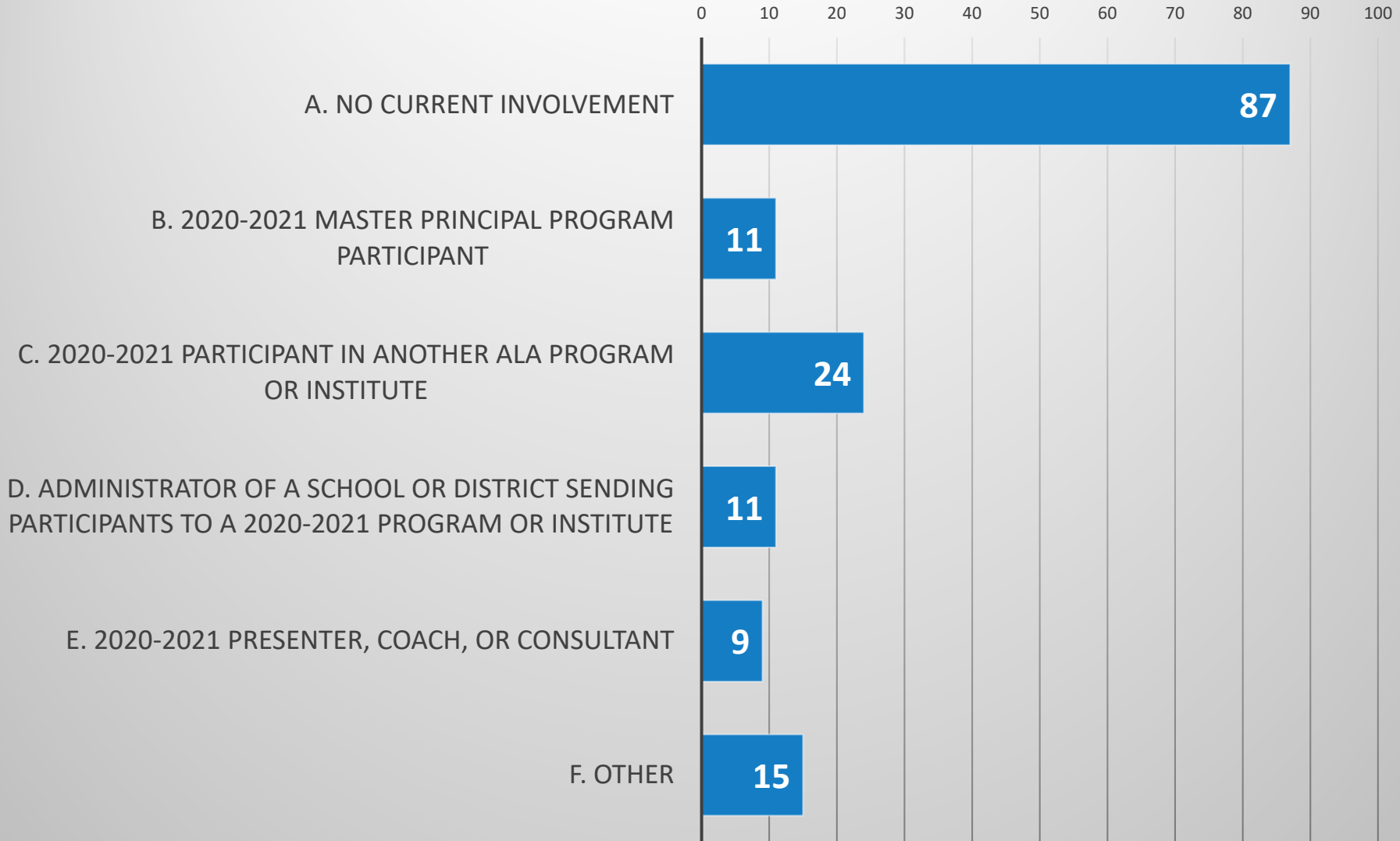
Poll and Chat
Responses

Conversations With... The New ALA

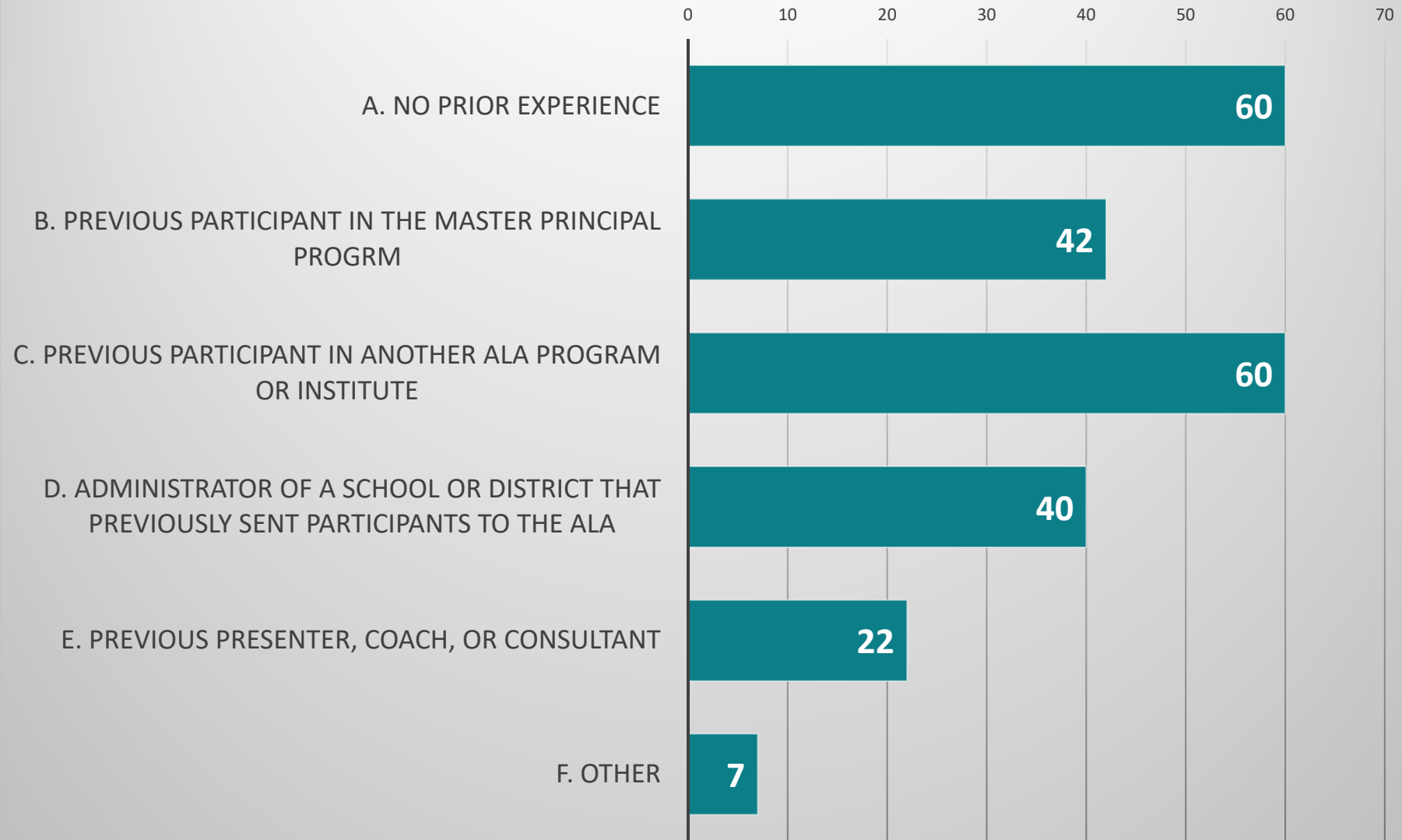
Poll Responses: Participants' Current Role in Education



**What is your current level of involvement with
the Arkansas Leadership Academy?
(Please select all that apply.)**



**What is your prior experience with
the Arkansas Leadership Academy?
(Please select all that apply.)**



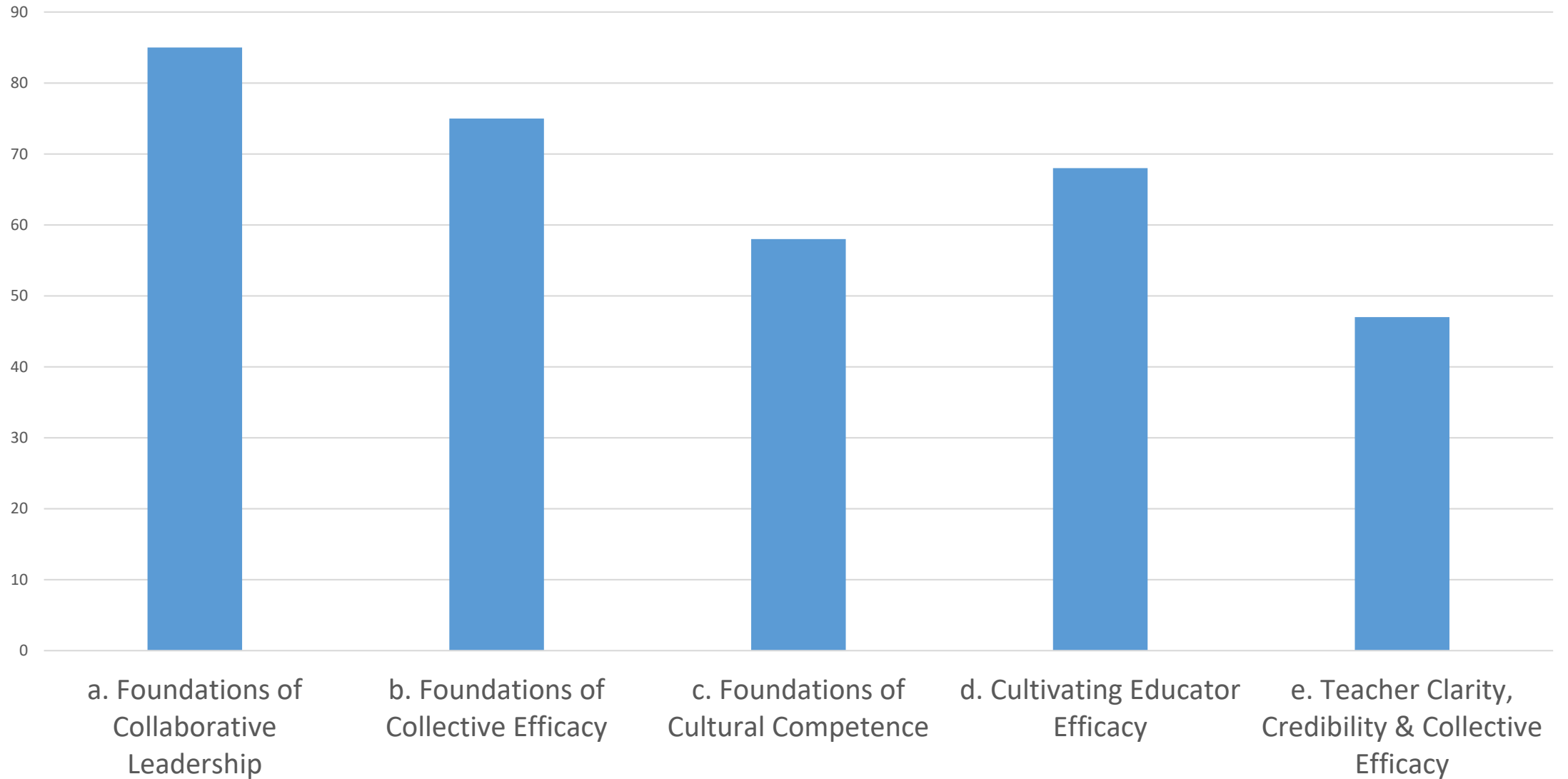
Priority Topics

The following slides depict participant responses to prompts regarding priorities for leadership development. This information was supplied by participants through the Zoom poll feature. This information will inform the topics selected for ALA Reach in the 2021-2022 school year, and perhaps future school years.

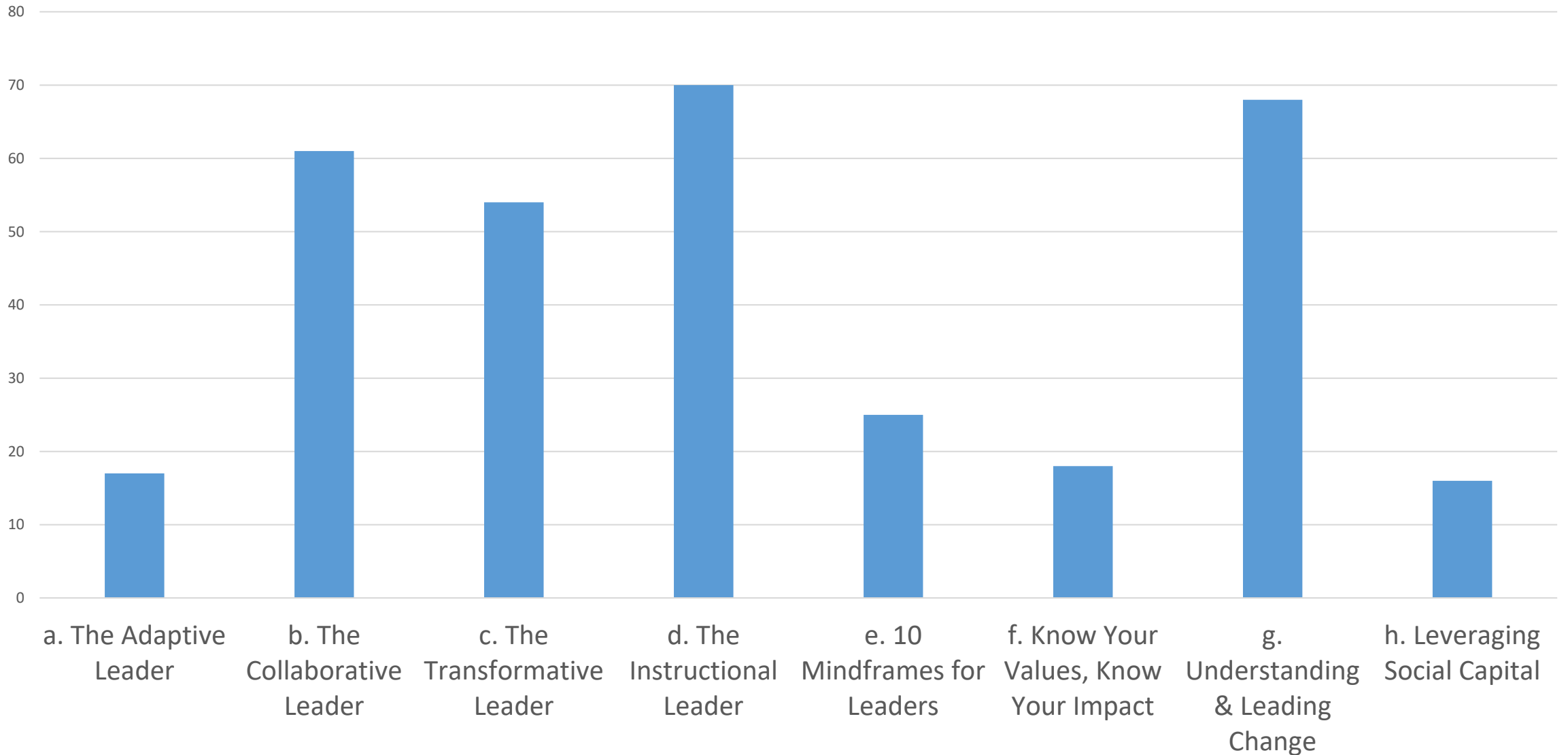


Poll and Chat Responses

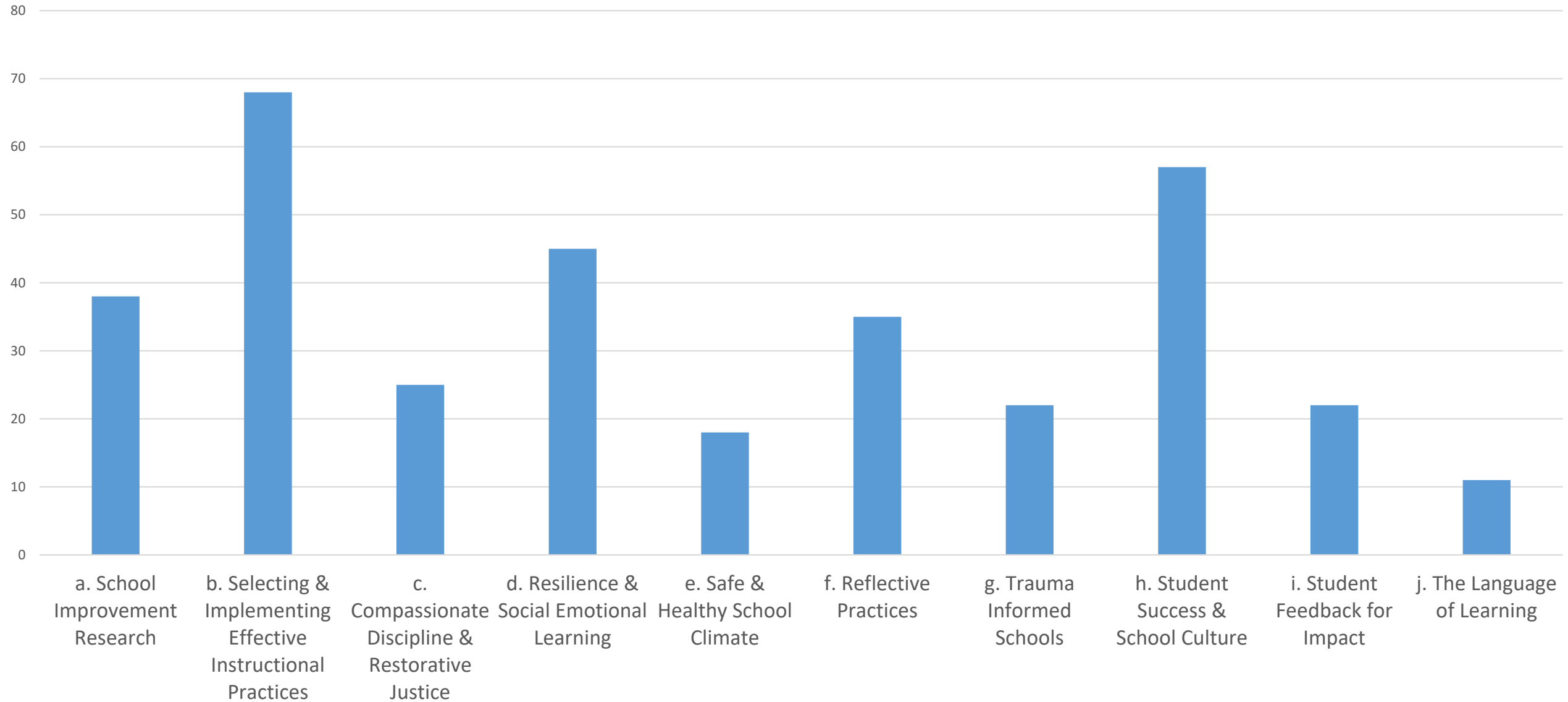
**Of the following Foundational Topics,
which 1-3 are highest priorities for your own leadership development or the
development of leaders in your district for the 2021-2022 school year?**



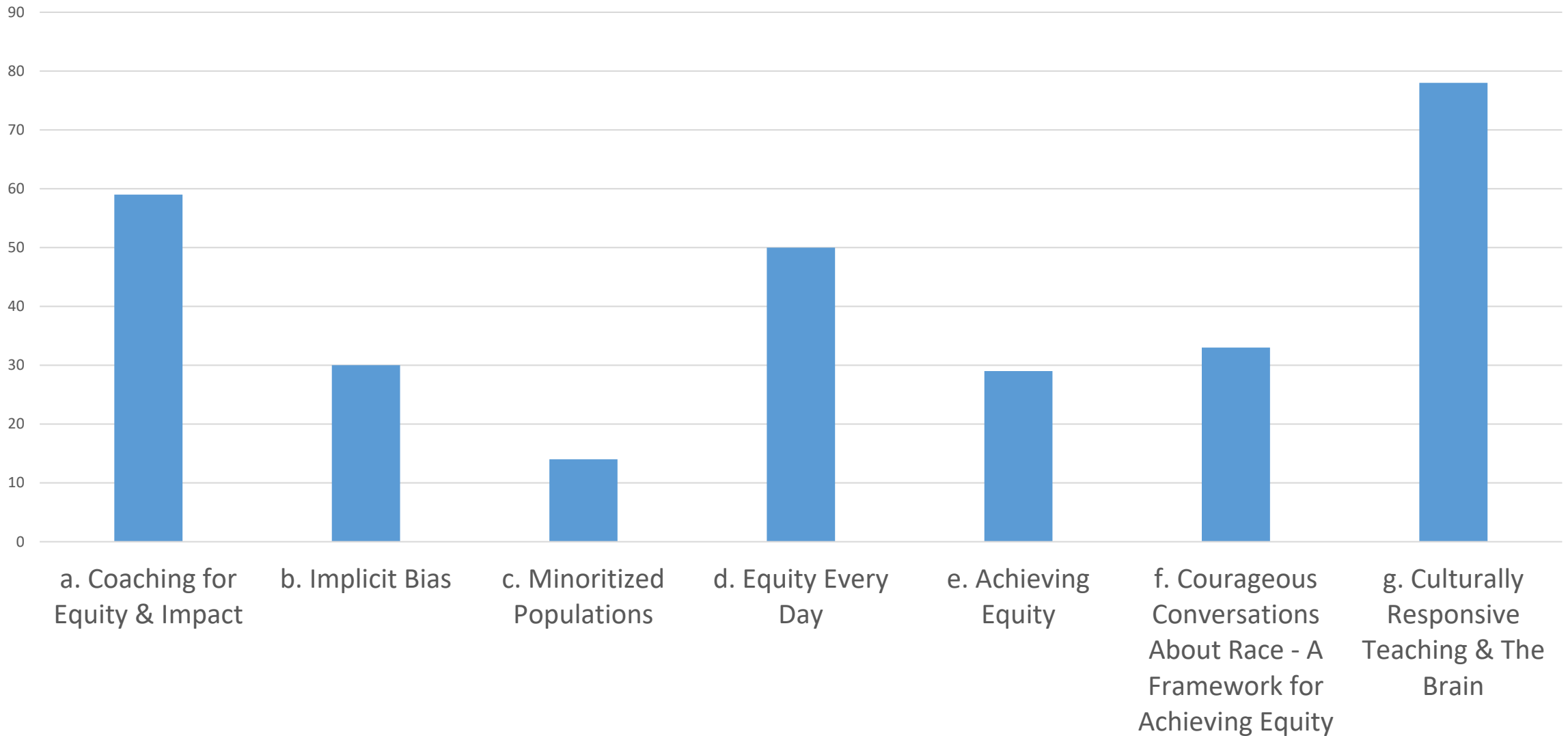
**Of the following Leadership Topics,
which 1-3 are highest priorities for your own leadership development or the
development of leaders in your district for the 2021-2022 school year?**



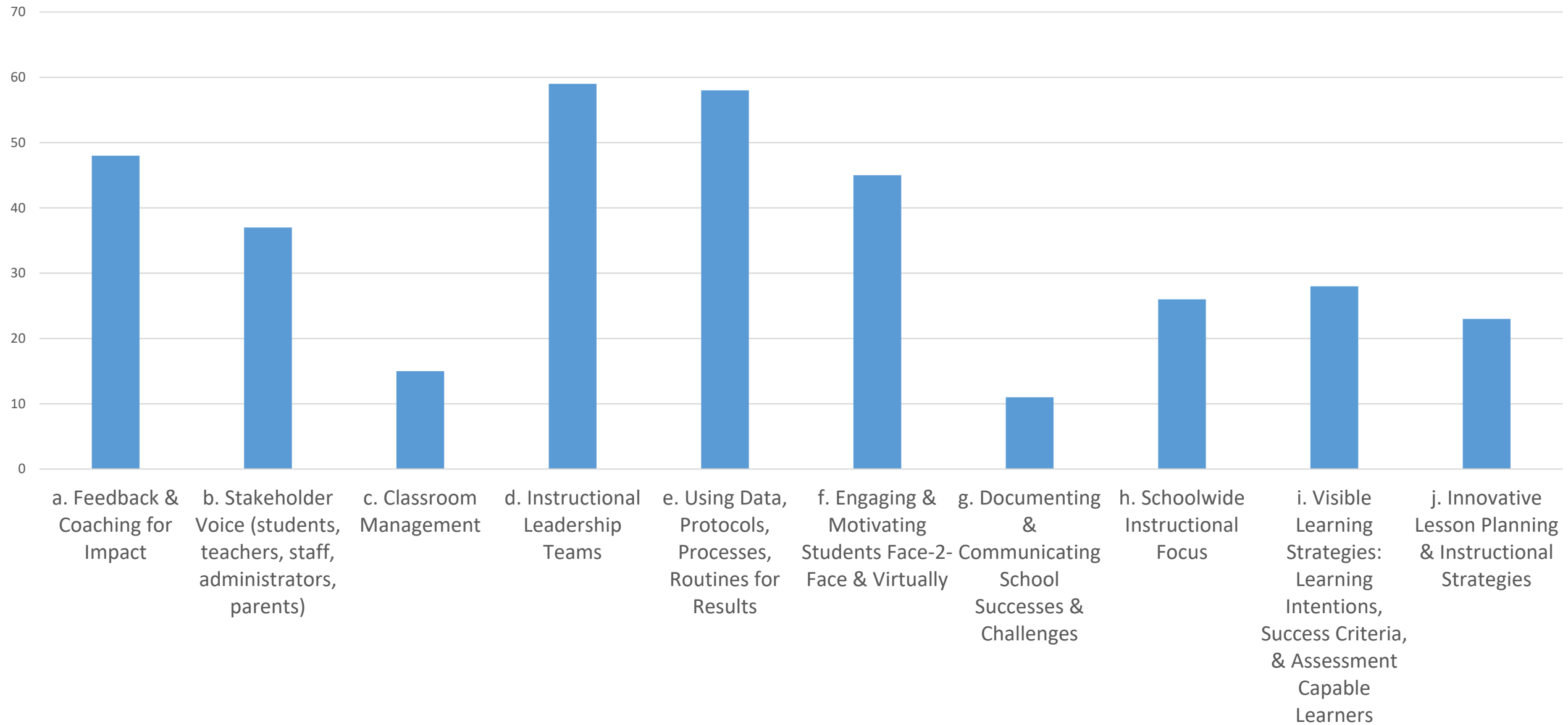
**Of the following Research Topics,
which 1-3 are highest priorities for your own leadership development or the
development of leaders in your district for the 2021-2022 school year?**



**Of the following Equity Topics,
which 1-3 are highest priorities for your own leadership development or the
development of leaders in your district for the 2021-2022 school year?**



**Of the following Strategies and Tools,
which 1-3 are highest priorities for your own leadership development or the
development of leaders in your district for the 2021-2022 school year?**



Challenges

The following slides depict participant responses to prompts regarding barriers to participation. This information was supplied by participants through the Zoom chat feature.



Poll and Chat
Responses

What barriers have existed to participation in ALA offerings in prior years?

What potential barriers exist to participation in ALA offerings going forward?

- Not knowing that you existed or what you offered
- Time and family
- Time away from the building
- Not aware of how to get into the program
- The fees for the institutes are costly
- As a participant and coach in the early 2000's, I was surprised to learn ALA is still around. Publicity/communication just stopped.
- It appears that REACH will actually remove the barriers that have existed when people need to opt in and out of training based on need rather than commit to an entire year. I like the flexibility that leads to those longer term supports.



**Poll and Chat
Responses**

ala@apsrc.net

(501) 492-4300

<https://www.apsrc.net/> or <http://bit.ly/ALAtransition>



Contact Information